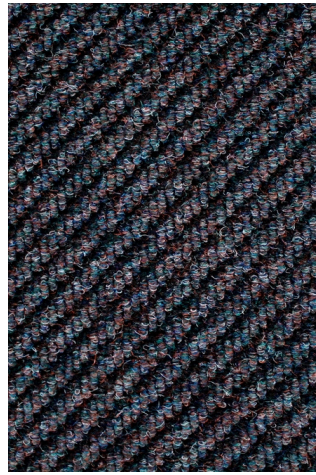


COMMERCIAL ENTRANCE TILE

20x20



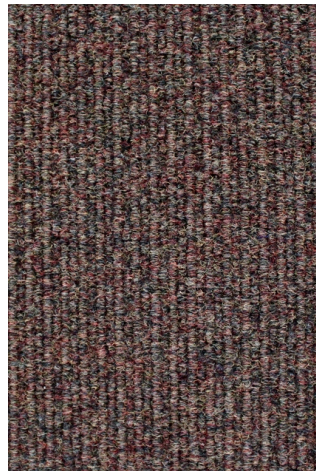
Earth Tile
Steel Grey
SPDT-ET2225
81.6 SY / 734 SF



Protector Plus
Carbon
SPDT-PP470
147.6 SY / 1328 SF



Fire Tile
Winter Grey
SPDT-FT2225
57.6 SY / 518 SF



Mega Tile
Tundra
SPDT-MT923
38.4 SY / 345 SF

COMMERCIAL ENTRANCE MATS

3' x 5' & 6' x 4"



**Duronop
Tobacco
SPD-DU-97
3' x 5' 5
6' x 4' 10**



**Duronop
Beige
SPD-DU-153
3' x 5' 10
6' x 4' 5**



**Duronop
Steel
SPD-DU-531
3' x 5' 8
6' x 4' 7**



**Duronop
Red
SPD-DU-353
3' x 5' 3
6' x 4' 5**

First come, First serve
subject to prior sale